

FAZER

- High Efficiency Vaporizing System and Highly Durable Heaters Ensure 25% Increased Output.
- Modular Design for Easy, Cost Effective Maintenance.
- Standardized Interface Allows Interchangeable Control Modules on All Models.
- Illuminated Fluid Tank for Easy Monitoring for the Level of Fog Fluid.
- Electronic Low Fluid Monitoring Protects Pump from Running Dry
- Heavy-Duty, Quiet Pump for Continuous, Silent Operation.

For optimal aerosol output keep at least 30 cm
away from any obstacles.
Einrichtung in der Gebrauchsanleitung ist
Abstand von 30 cm von Gegenständen für besten
Aus- und wiederholbar gleiche in einem abgibt
ca. mind. 30 cm à 1/2m. Le di macchina.

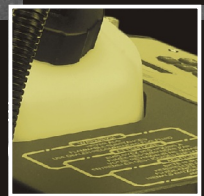
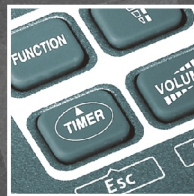
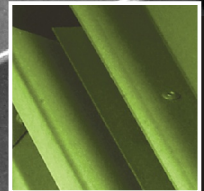




Table of Contents

Introduction	1
Important Safeguards	2
Unpacking & Inspection	4
Setup	4
Operation	5
Control Module Operation	6
ANTARIX-20 DMX Module Settings	9
Maintenance	10
Performance Notes	11



***Congratulations on the purchase of your new
ANTARI X Fazer***

Introduction

Thank you for choosing an ANTARI X Fazer. You now own a rugged and powerful state-of-the-art machine. Prior to use, we suggest that you carefully read all of the instructions. By following the suggestions found in this user manual, you can look forward to the reliable and satisfactory performance of your ANTARI Fog Machine for years to come.

Please follow these operation, safety and maintenance instructions to ensure a long and safe life for your fog machine.

Cautions

Risk of electric shock. Disconnect the appliance from the electric supply before removing the cover. Note: there are no user serviceable parts inside.

Important Safeguards

Danger of Electric Shock

- Keep this device dry.
- For inside use only. Not designed for outside use.
- For the 110V models, use 3-prong grounded electrical outlet only. Prior to use take care to determine that the unit is installed at the rated voltage.
- Always unplug your ANTARI Fog Machine before filling its tank.
- Keep fog machine upright.
- Unplug the machine when not in use.
- This machine is not water- or splash-proof. If moisture, water, or fog liquid gets inside the housing, immediately unplug the unit and contact a service technician or your ANTARI dealer before using it again.
- No user serviceable parts inside. Refer to your ANTARI dealer or other qualified service personnel.

Danger of Burns

- For adult use only. Fog machine must be installed out of the reach of children. Never leave the unit running unattended.
- Never aim the output nozzle directly at people.
- Fog machine output area is very hot. Avoid coming within 60 cm of the output nozzle during operation.
- Locate the fog machine in a well-ventilated area. Never cover the unit's vents. In order to guarantee adequate ventilation, allow a free air space of at least 20 cm around the sides and top of the unit.
- Never aim the output nozzle at open flames.

- If the supply cord is damaged, it must be replaced by manufacturer or its service agent or similarly qualified personnel in order to avoid a hazard.
- The output nozzle becomes very hot during operation (300°C). Keep flammable materials at least 50 cm away from the nozzle.
- Always allow your ANTARI X Fazer to cool down before attempting to clean or service it.

Danger of Explosion

- Never add flammable liquids of any kind (oil, gas, perfume) to the fog liquid.
- Use only the high-quality, water-based ANTARI fog liquid. Other fog liquids may cause clogging or "spitting".
- Always make sure there is sufficient liquid in the fog liquid tank. Operating this unit without liquid will cause damage to the pump as well as over-heating of the heater.
- If your ANTARI Fog Machine fails to work properly, discontinue use immediately. Drain all fog liquid from the tank, pack the unit securely (preferably in the original packing material), and return it to your ANTARI dealer for service.
- Always drain tank before mailing or transporting this unit.
- Never drink fog liquid. If it is ingested, call a doctor immediately. If fog liquid comes in contact with skin or eyes, rinse thoroughly with water.

Important:

Pay attention to all warning labels and instructions printed on the exterior of your ANTARI X Fazer.

Unpacking & Inspection

Open the shipping carton and verify that all equipment necessary to operate the system has arrived intact.

Before beginning initial setup of your ANTARI Fog Machine, make sure that there is no evident damage caused by transportation. In the event that the unit's housing or cable is damaged, do not plug it in and do not attempt to use it until after contacting your ANTARI dealer for assistance.

Setup

- Remove all packing materials from shipping box. Check that all foam and plastic padding is removed, especially in the nozzle area.
- Place fog machine on a flat surface and remove fog liquid tank cap.
- Fill with only ANTARI Fog Fluid. ANTARI X Fazer only works with uncontaminated ANTARI Fog Fluid. Other fluids may cause spitting and serious clogging problem and could result in the production of an unhealthful fog. The use of other fluids voids the warranty of the ANTARI X Fazer. When filled, place cap back on liquid tank.
- Firmly attach the control module cable to the connector inside the rear chamber of the machine.

WARNING:

Use of any fluid other than ANTARI fog fluid or modification or attempted to unauthorized repair of the X Fazer will immediately invalidate the warranty.

Operation

- Plug power cord into a grounded electrical outlet.
Turn power switch on rear of unit to " ON" position.
Warm-up is complete when the display on control module shows " Ready to Faze."
- To emit fog, press the appropriate button on the control module for the desired length of time.
- Loosen the screws on the two sides of the vent to adjust output angle as desired.
- The control unit's display will cycle " Warming up" and " Ready to Faze " as the machine re-heats to the proper operating temperature.
- When the fluid is running low, the LED inside the tank chamber starts blinking for two minutes and then stop operation to protect the pump from running dry..
- Always monitor liquid level to prevent interrupted operation.
- For further information on operating your ANTARI X Fazer, see the section titled, "Control Module Operation" on page 6.

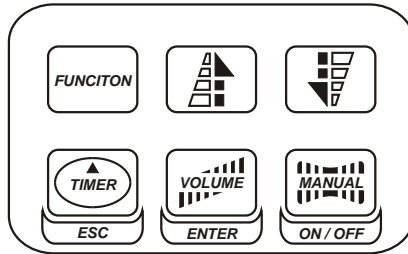
If your model includes a mounting bracket designed for overhead installation, it may be installed at floor level or suspended overhead. If the unit is to be mounted using the bracket, it is important that the fog does not shoot directly at any one's face. Whatever installation method you choose, do not allow the unit to have more than a 15 degree angle of inclination.

Important:

Always monitor tank fluid level as you are fogging. Running a fog machine with no fluid can permanently damage the unit.

If you experience low output, pump noise or no output at all, unplug immediately. Check fluid level, the external fuse, control module connection, and power from the wall. If all of the above appears to be O.K., plug the unit in again. If fog does not come out after holding the control module button down for 30 seconds, check the hose attached to the tank to make sure there is fluid going through the hose. If you are unable to determine the cause of the problem, do not simply continue pushing the control module button, as this may damage the unit. Return the machine to your ANTARI dealer immediately.

Control Module Operation



- **X-10:** 10 meter wired multi-function remote control module with 5-pin XLR connector for ANTARI X Series models X-310, X-510, X-515, X-530. Its interface allows the operator to customize fog machine functions by adjusting fogging duration, interval and volume. Its LCD displays current operating parameters, which are automatically stored in non-volatile memory, allowing the machine to be powered down without losing function settings. Instructions below:

1. Via the Function key, you can adjust the desired settings. Pressing the Function key will cycle through different options including Volume, Timer, Heat & Fan. The Enter (Volume) Key is used to select the desired option. To adjust fog output volume setting, simply go into Volume option. Adjust the volume percentage (within the range of 1% to nonstop burst) by means of Up / Down keys. To adjust timer setting, go into Timer option. Cycle through Interval (within the range of 1 to 900 seconds), Duration (within the range of 1 to 200 seconds), and Volume (within the range of 1% to nonstop burst) by means of Up / Down keys. Use Enter (Volume) Key to select each option and make changes as desired. To turn off the heater and fan, go into Heat & Fan option. Use Enter (Volume) Key to confirm the selection. Use On/Off (Manual) Key to turn it on.

2. Always press Enter(Volume) key to confirm setting.

3. Press ESC(Timer) key to exit current menu level and move to an upper(previous) level.

4. Press the Timer key to activate the timer function. The display shows the adjusted interval and the device counts the seconds down to "0". After that, the fog emission is triggered at the volume adjusted under "Timer" Option. The duration depends on the settings adjusted under "Duration". If you wish to deactivate the

timer function, press the Timer key once more.

5. Press the Volume key for immediate triggering of the fog emission at the volume adjusted under "Volume " Option. Press the Volume switch once more in order to stop the fog emission.

6. Press the Manual key for immediate triggering of the fog emission at 100 % volume. Let the Manual key loose in order to stop the fog emission.

7. When in standby mode, press On/Off key to reactive the machine.

- **X-20:** DMX Interface module. Please refer to the section on Page 8 titled X-20 DMX Module Settings.
- **X-30:** All the X-10 features plus wireless capability. Wireless operation is possible up to a distance of 50 meters. The address can be set from 0 to 8, which means total 9 different units can be controlled separately or in any combination desired. Press function to cycle to RF mode to select desired address number. Make sure the address setting on the X-30 matches the address setting on the transmitter. There are two buttons on the transmitter. Blue one is to emit fog and Red one is to stop the operation.

ANTARI X-20 DMX Module Settings

Value	Function
0 - 5	OFF
6 - 249	Volume Control(5% - 95%)
250 - 255	Maximum Volume Output (100%)

On X Fazer such as X-510, X-515 and X-530, X-20 uses only 1 channel to control volume output operation. On X Fazer such as X-310, X-20 uses 2 channels to control both fog volume and fan volume. Whatever channel you select on the unit, the channel next to it will be selected automatically for fan volume control. Each channel has a value range of 0 to 225. Timer functions such as duration and interval can be programmed using the DMX controller or the DMX control software being used by lighting and effects operator.

If Channel has a value from 0 to 5, the unit is OFF.

Between the values 6 to 249 the volume of fog output is regulated. With 6 being the minimum volume of fog produced and 249 approaching the maximum. The volume output rises as the DMX value is increased.

If Channel has a value from 250 TO 255, the machine will operate at maximum output.

Note: In the example above, if the machine were assigned the DMX address of 124, Channel would correspond to DMX address 124.

In general, ANTARI X Fazer with X-20 DMX Module conform to the following performance specifications:

- 1.** Average Operating temperature = 250°C
- 2.** X Fazer can maintain maximum output for 60 seconds or more

Maintenance

Do not allow the fog liquid to become contaminated. Always replace the caps on the fog liquid container and the fog machine liquid tank immediately after filling.

After every 40 hours of continuous operation, it is recommended to run a cleaning solution composed of 80% distilled water and 20% white vinegar through the system to prevent the accumulation of particulate matter in the heating element. The recommended cleaning regimen is as follows:

- 1.** Empty all fog fluid from machine. Add cleaning solution to tank. Plug unit in and begin warm up.
- 2.** Run unit in a well-ventilated area until tank is empty.
- 3.** Cleaning is now complete. Refill with fog liquid.

Note: All fog machines are prone to clogging due to the thick consistency of fog fluid and the high temperature at which it vaporizes. However, a properly maintained fog machine should provide years of reliable use.

Clean with a dry cloth only. Store dry.

Cleaning your fog machine regularly will help reduce costly parts replacement and repair charges.

Performance Notes

- It is recommended that you set the Fan output at 100% and Fog Volume output at 15-20%. With such setting, you will have continuous output of very fine haze effect
- Whenever enormous effect is required, press Manual key to emit fog at 100% output instantly.
- For quiet operation, lower down Fan output as desired.
- All fog machines have a recycling period after long bursts when the machine will shut itself down for a short period in order to heat up again. During this time, no fog can be produced.

Please read and save these instructions

LIMITED WARRANTY

ANTARI Lighting and Effect Ltd. warrants to the original purchaser that the ANTARI X Fazer will be free from original defects in workmanship and material for a period of six months from the date of purchase.

During the warranty period, machines will be repaired or replaced at the option of ANTARI or its designated dealer.

If the purchaser returns a completed registration card to ANTARI or its designated dealer within 30 days of purchase, ANTARI will extend the limited warranty on the pump assembly and the heat exchanger assembly to a FULL YEAR from the date of purchase. If the warranty card is not received by ANTARI or its designated dealer, the warranty will remain effective for six months.

The warranty does not extend to any parts of the ANTARI X Fazer that have been subject to misuse or accident. Neither does the warranty cover any ANTARI X Fazer that has been opened, modified or repaired other than by ANTARI or its designated dealer.

The warranty will not apply if procedures described in the Instruction Manual are not followed. It is the user's obligation to clean and maintain the ANTARI X Fazer according to these instructions, and to follow acceptable practices for handling electrical devices with heating elements.

**NOTE: USE OF ANY FLUID OTHER THAN ANTARI FOG FLUID
WILL VOID WARRANTY.**



For current product information visit Antari at :www.antari.com
For information requests please contact us at :sales@antari.com